

Aker BioMarine

Our approach to ESG and how we want to work with Terravera

*Ragnhild Dragøy,
VP Product Management and Sustainability*

Aker BioMarine

Integrated Value Chain

KRILL HARVESTING



INGREDIENT PRODUCTION



RESEARCH & DEVELOPMENT



CONSUMER BRANDS



>65%

of total global krill catch

55 000

metric tons of products

~200

published studies

>13m

individual units sold to US consumers the last year

UN SUSTAINABLE DEVELOPMENT GOALS GUIDING OUR STRATEGIC DIRECTION

REDUCE INDUSTRIAL FOOTPRINT

14 LIFE
BELOW WATER



12 RESPONSIBLE
CONSUMPTION
AND PRODUCTION



STRENGTHEN POSITIVE HANDPRINT

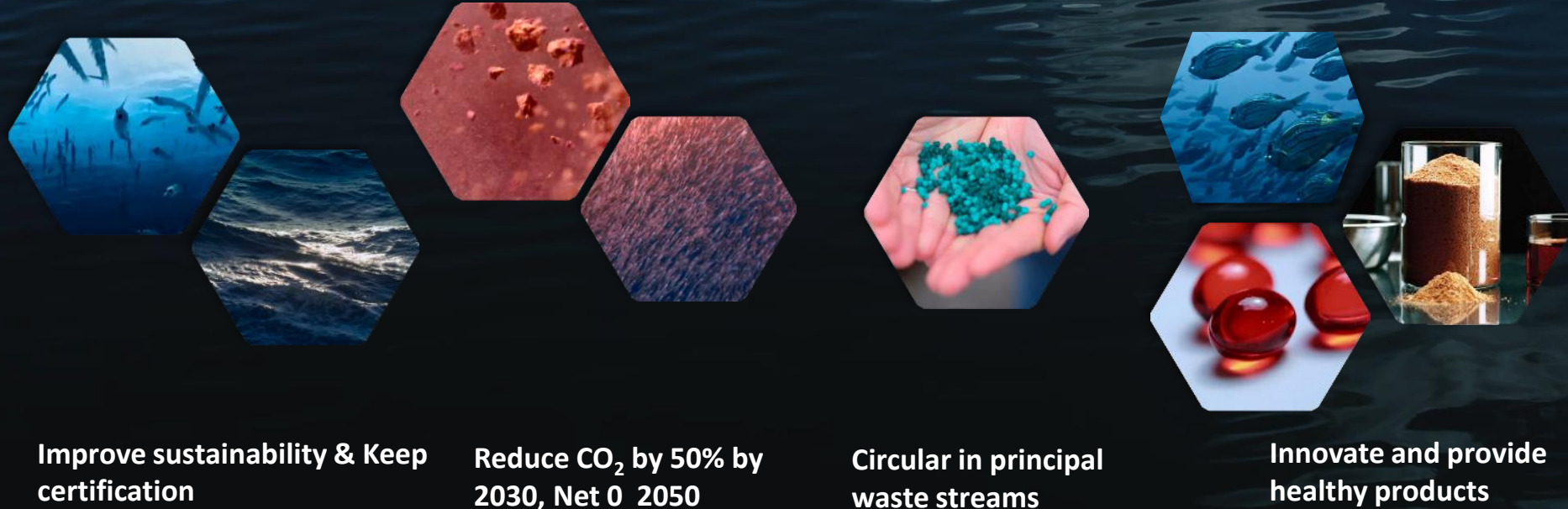
2 ZERO
HUNGER



3 GOOD HEALTH
AND WELL-BEING



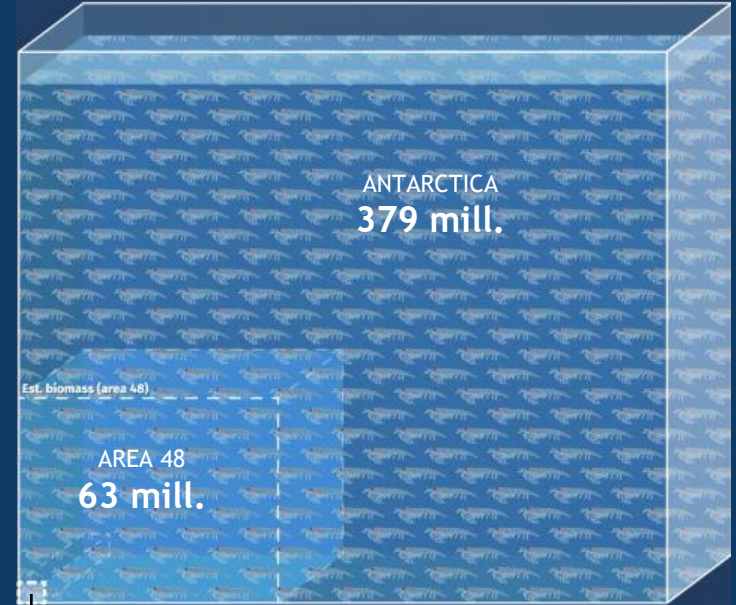
Defined ESG goals for the company - Aligned with business models



Sustainable harvesting, protected biodiversity

QUOTA

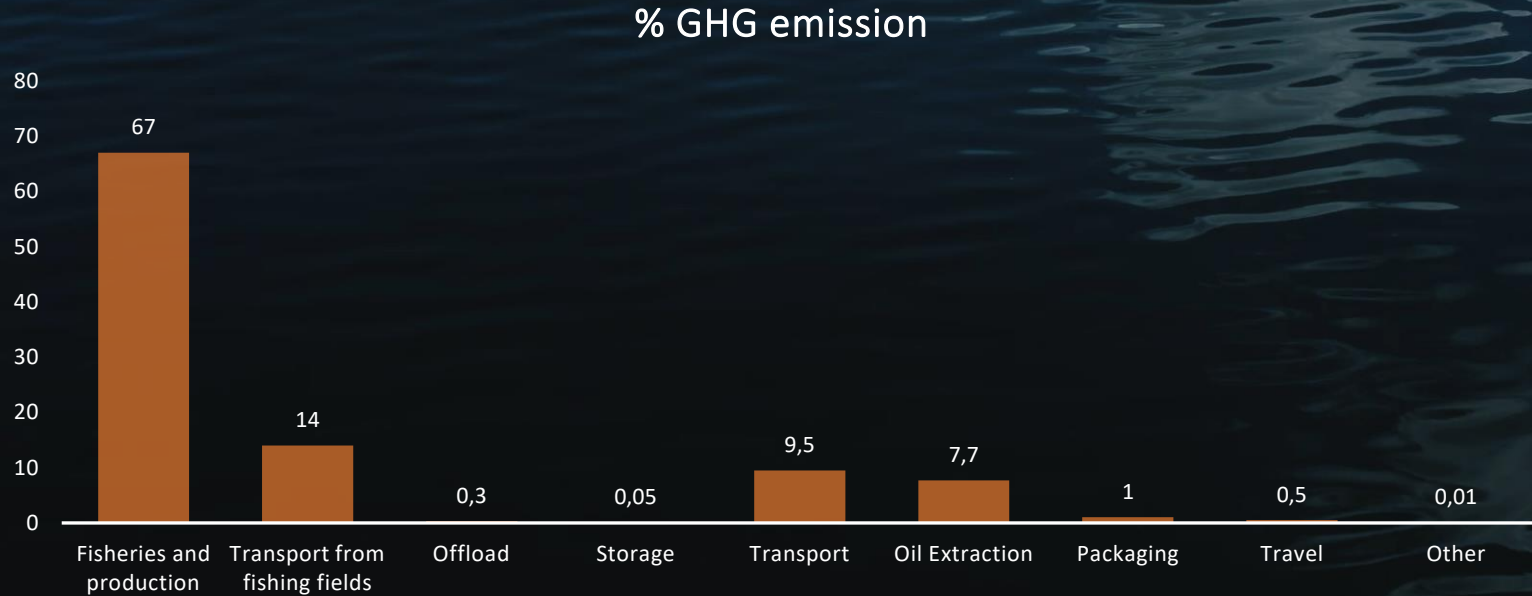
< 1%



QUOTA
< 1%

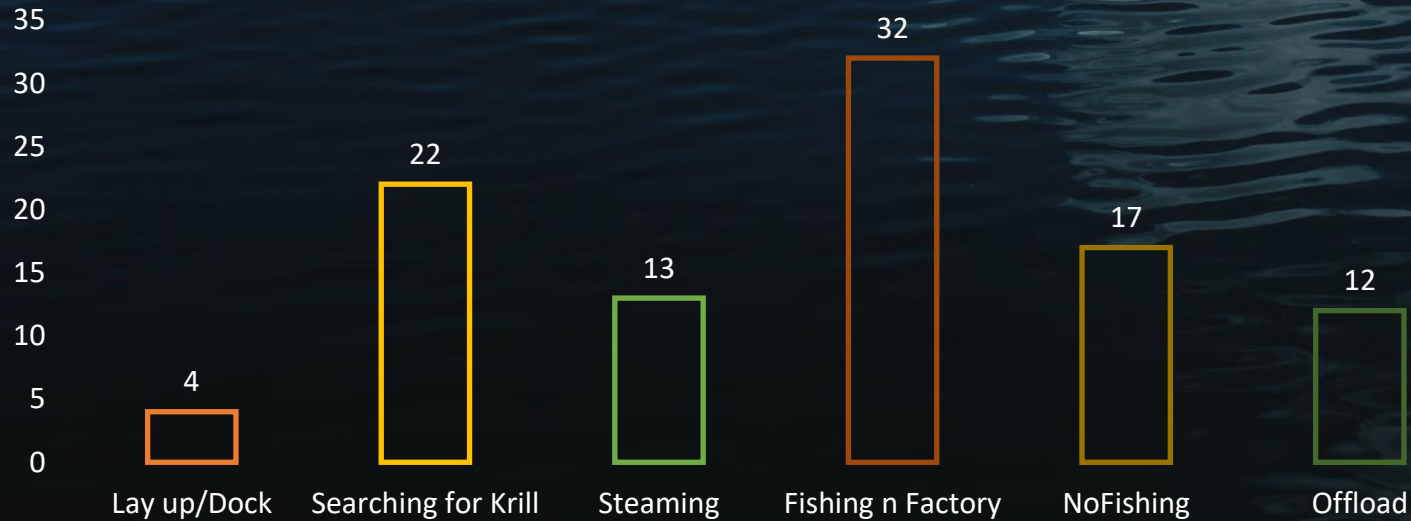
Data control in the value chain

Verified CO₂ report



Identify emission drivers

% use for fishing and production





HUJROcean

Centre for the Fourth Industrial Revolution

WORLD
ECONOMIC
FORUM



Create a team



Overall responsible
Reporting structures
New areas



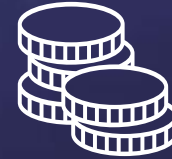
Communication
Of goals, progress
and results
Internally
Externally



**Sustainable
fisheries**
-Certifications
-Observers, quota



**Sustainable
Production**
-LCA/PEF
Decarbonization



**Sustainable
Finance**
-green loans
-Taxonomy
-EGS internal
control



Governance
-Transparency Act
-Legal
requirements



Data

Have input data, but need better granularity and more “crunch”

Sustainability is integrated into management team, board tracked, and business model aligned

Develop better decision tools

Digitization of lab

To Software

How does perturbation along value chain affect sustainability



AKER BIOMARINE

Why work with Terravera

- Better decision tools when we make decisions on implementing changes
- Learn from others how to implement ESG goals
- Create models and work better with suppliers
- Share experience in as many channels as we can

How is QRILL sustainable?

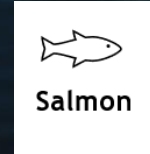
*Conserve krill stock
and ensure biodiversity*



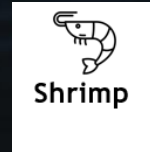
*Reduce industrial footprint
through better fishing,
processing and logistics*



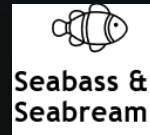
*Increased efficiency in
aquaculture farms*



Salmon

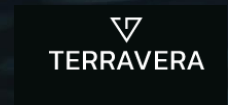


Shrimp



Seabass &
Seabream

Collaborations





THANK YOU!

ragnhild.dragoy@akerbiomarine.com

