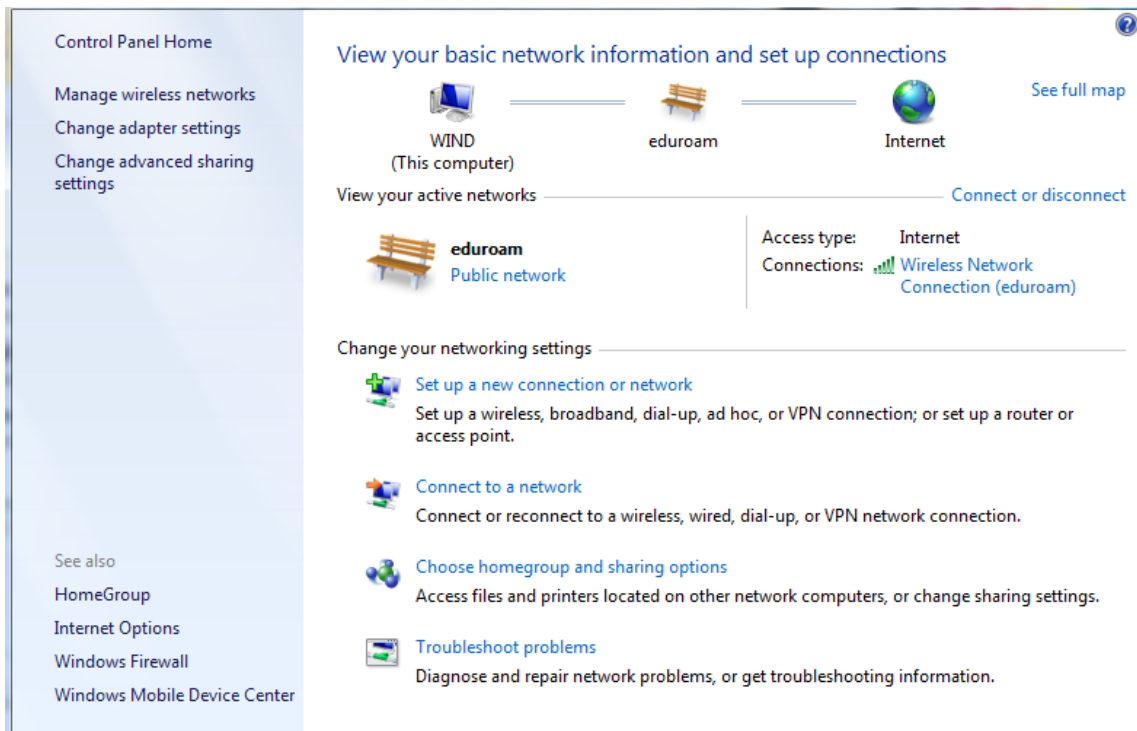
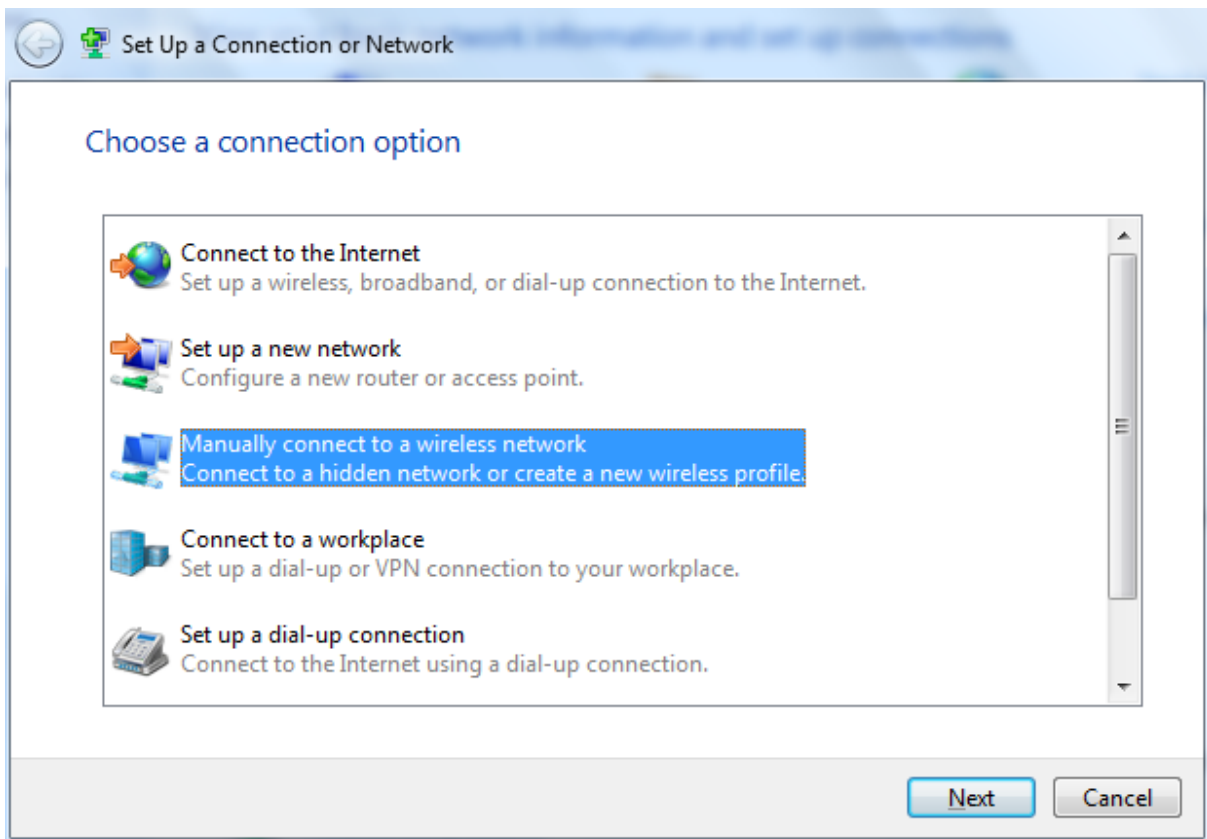


How to connect the wireless network at NHH with windows 7

Step 1: Choose start → Control Panel → “View network status and tasks” / “Network and Sharing Center”. Then click on “Set up a new connection or network”.



Step 2: Select “Manually connect to a wireless network”.



Step 3: Enter information as in the below screenshot. If your network interface card does not support “WPA2” with “AES”, you can try to use “WPA-ENTERPRISE” with “TKIP”

Manually connect to a wireless network

Enter information for the wireless network you want to add

Network name:

Security type:

Encryption type:

Security Key: Hide characters

Start this connection automatically

Connect even if the network is not broadcasting

Warning: If you select this option, your computer's privacy might be at risk.

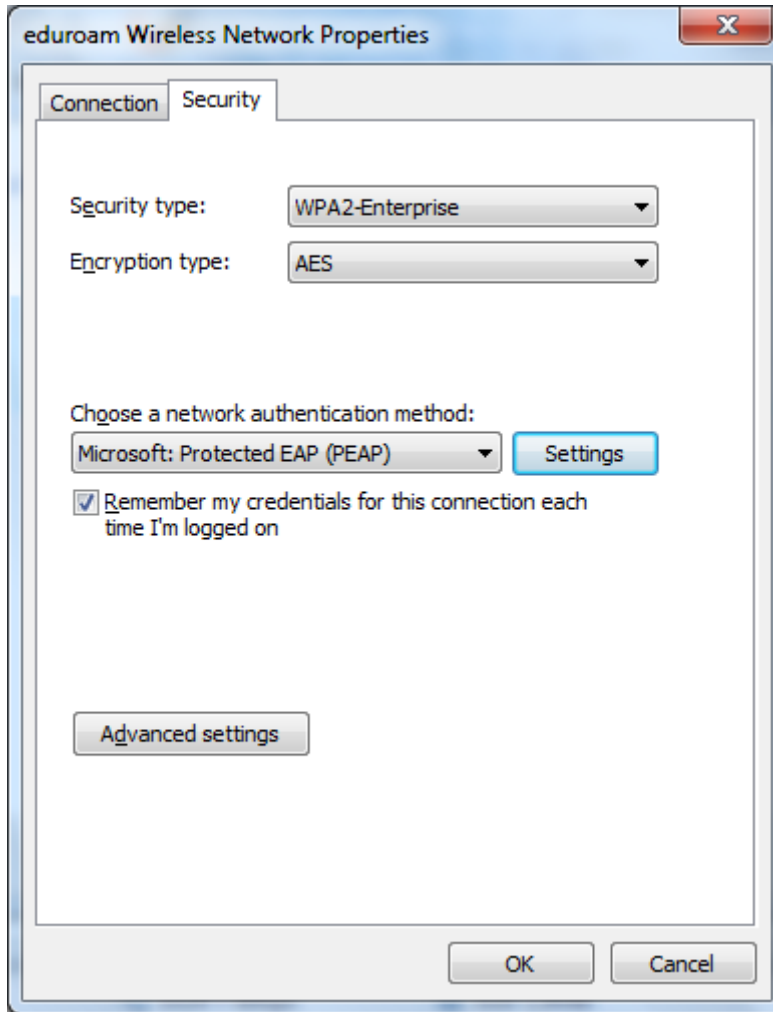
Step 4: Select “Change connection settings”

Manually connect to a wireless network

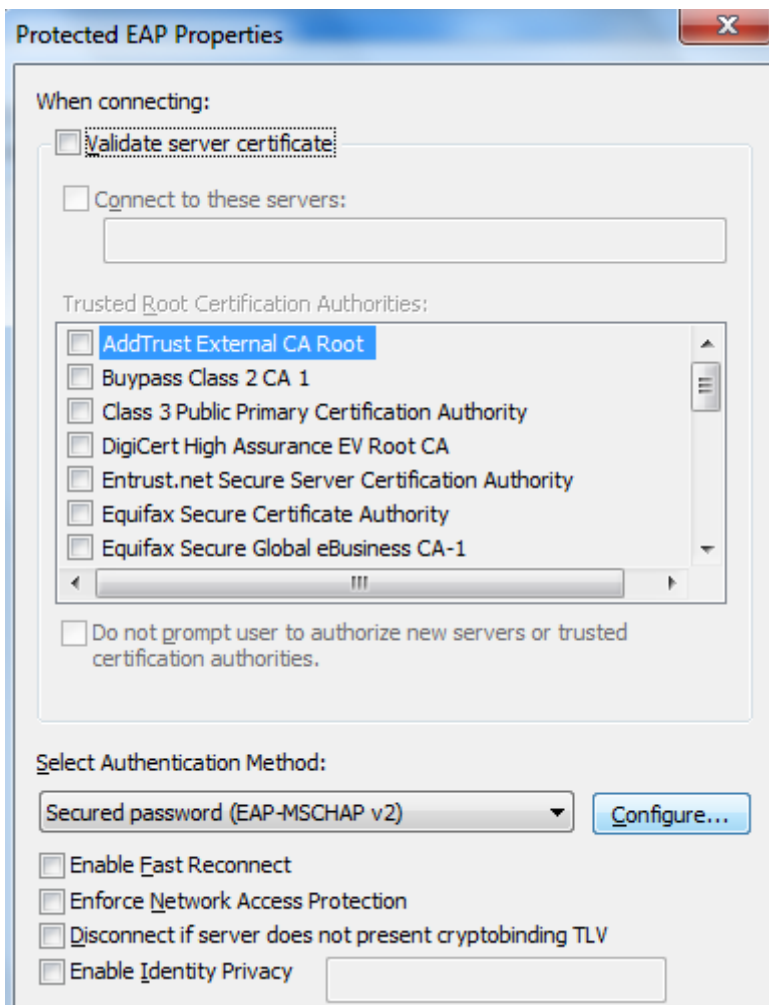
Successfully added eduroam

Open the connection properties so that I can change the settings.

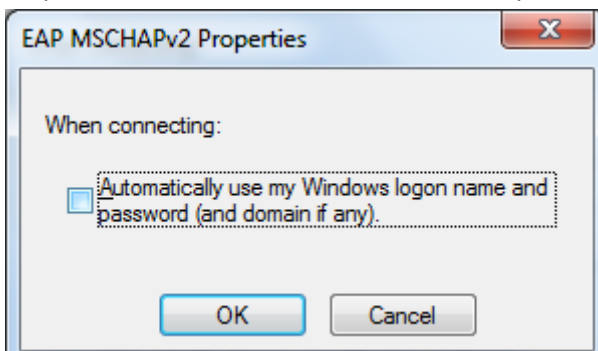
Step 5: Choose the tab "Security" and press "Settings"



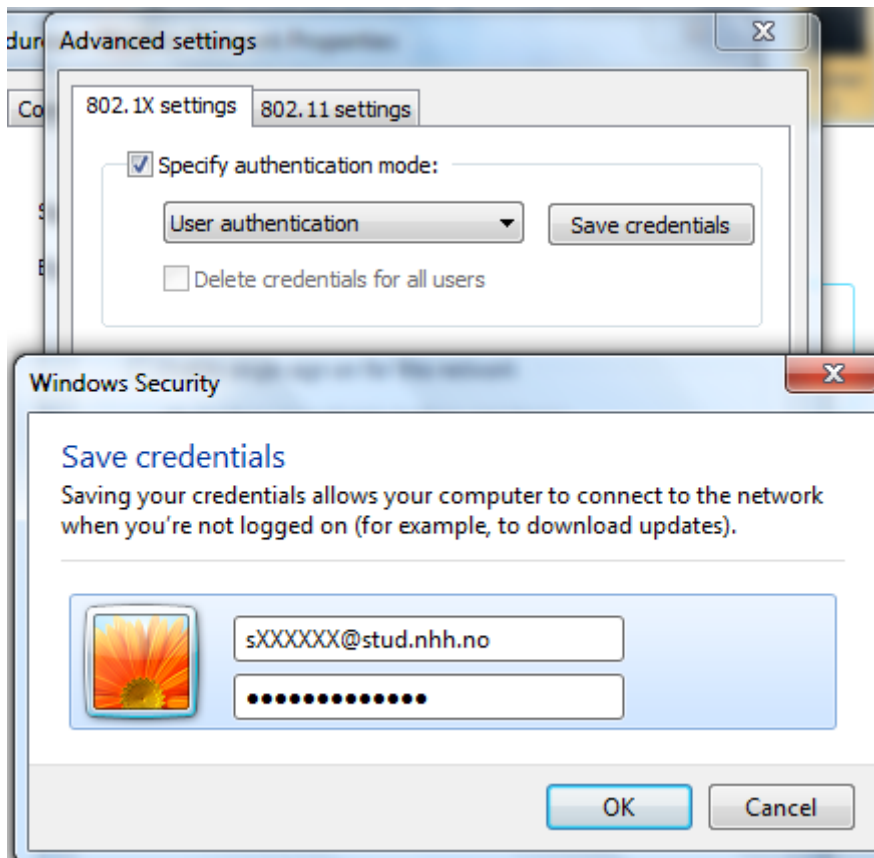
Step 6: Remove the mark on “Validate server certificate” and press configure



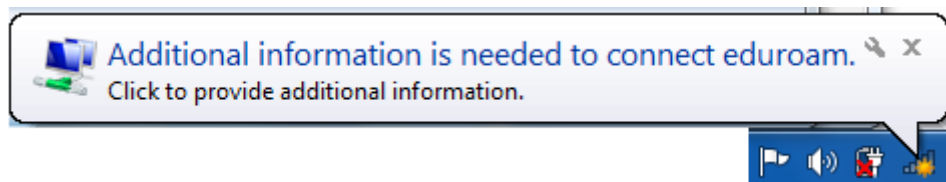
Step 7: Remove the mark on “Automatically use my... ” and press OK.



Step 8: Go back to “Wireless Network Properties” (Step 5) and press “Advanced settings”, select “User authentication”, press “Save credentials”. Insert your student number followed by @stud.nhh.no and your NHH password.



Step 9: You might get a message popup, telling that “Additional information is needed”. Click on the message and fill in username and password as in step 8.



Troubleshooting:

- Is your wireless card working and turned on.
- Have you entered correct password and username? Remember to use sXXXXXX@stud.nhh.no.
- If you still have problems connecting to Eduroam go back to step 1. Click on “Manage wireless networks” on the left side. Remove the Eduroam connection, restart your computer and start from step 1 again.

